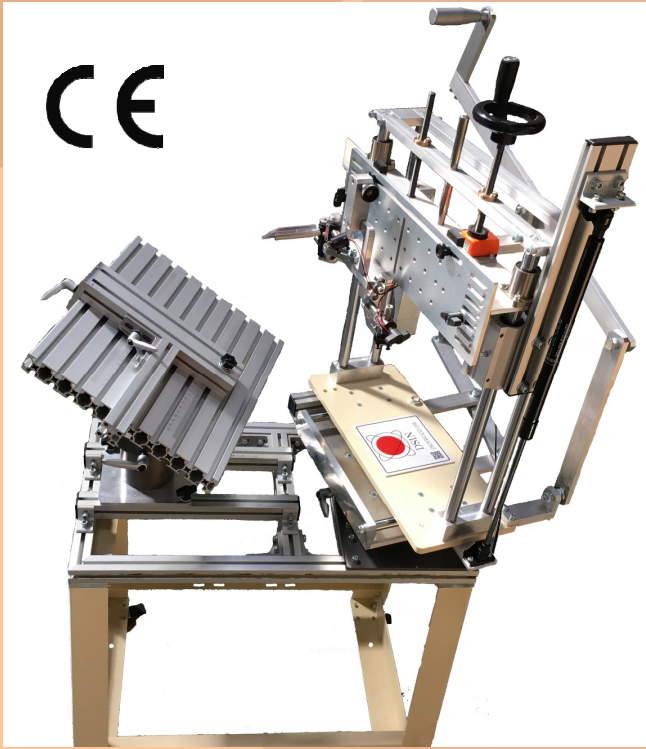


UNIVERSAL RACK SET



Specifications:

1. Overall Length x Width x Height: 750 x 630 x 1380 mm
2. Router motor housing diameter: $\varnothing 89.0 - \varnothing 89.6$ mm
3. Router weight: 2.0 - 3.8 kg
4. Rack set total weight: 62 kg
5. Maximum displacement along axis:
 - a) Forward/Back cutting direction (Z-axis): 110 mm
 - b) Left/Right lateral direction (X-axis): 220 mm
 - c) Up/Down vertical direction (Y-axis): 250 mm
6. Maximum work load: 13 kg
7. Work platform area: 300 x 360 mm
8. Two <5 mW laser crossed lines to form a center mark
9. Chip shield assembly for safety protection
10. Platform pitch rotation: -90° to $+90^\circ$ (pinhole at 0°)
11. Platform yaw rotation: $0^\circ/90^\circ/+90^\circ/180^\circ$ (pinhole at every 90°)
12. Optional extension rack for handling large workpiece

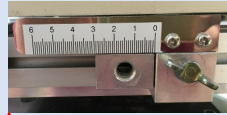
Woodworking:

1. For wood only
2. Use templates to guide the cutting work and create a desired joinery
3. In the scope of supply, standard templates:
 - double-circular templates (10 and 12mm), circular templates,
 - tenon/mortise templates (10 and 14mm), box joint templates,
 - dovetail templates.

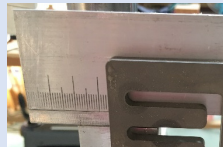
Patent No.

- I632978 (Taiwan)
- 3215596 (Japan)
- 20172182993.9 (China)

Cutting depth scale



Template holder lateral displacement scale



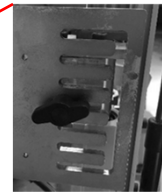
Template holder vertical displacement reader



Work platform scale



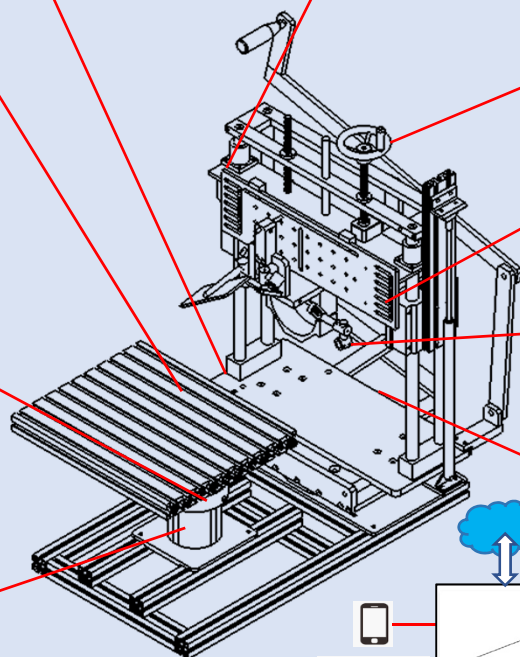
Template holder vertical displacement pinhole



Platform pitch rotation scale, -90° to $+90^\circ$



Platform yaw rotation scale 360° (pinhole at every 90°)

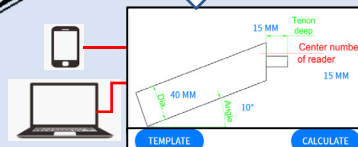


Ultra-red laser crossed lines to locate cutting center along X and Y directions

Fixture rotation scale -60° to $+60^\circ$



Web calculation



杺鑫機械有限公司
 DSIN MACHINERY CO., LTD.
<http://www.diywoodtooling.com>
 Tel: +886-4-24839458 E-mail: dsin@diywoodtooling.com



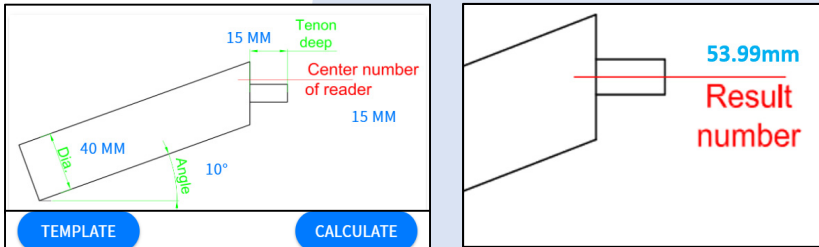
UNIVERSAL RACK SET

Web calculation made simply:

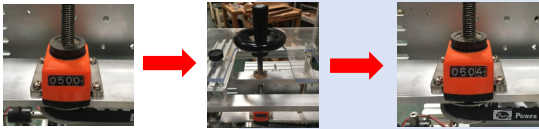
1. Make a center mark on workpiece, align laser to the mark, then get the number from the reader.



2. Use the web calculation to calculate the result number easily.

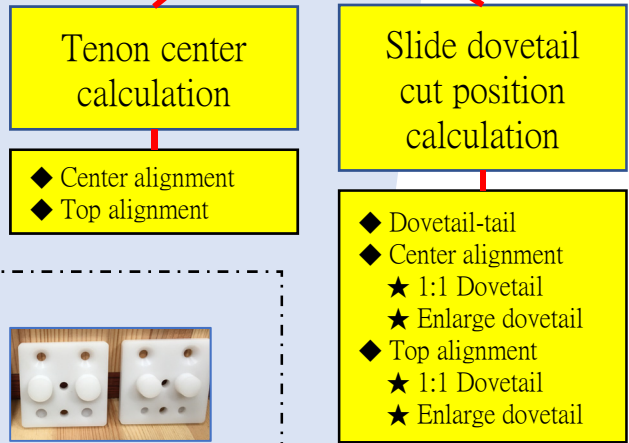
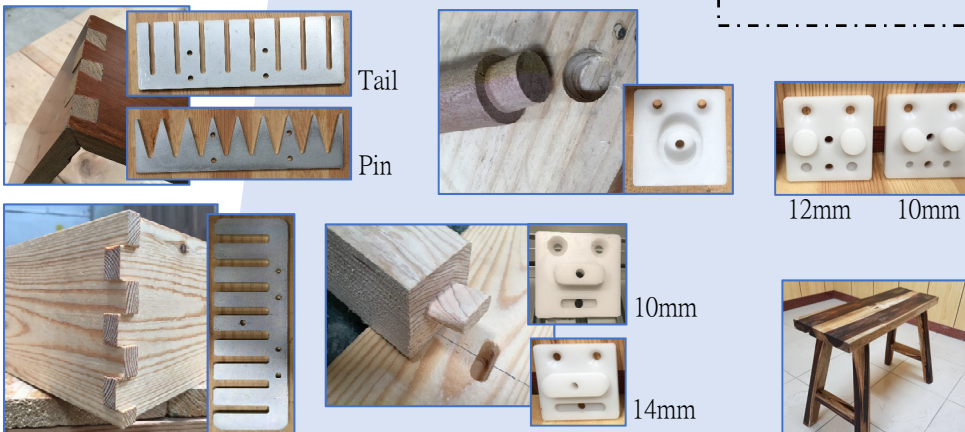


3. Adjust the template position by setting the reader number equaling to the resultant number.



4. The tenon will be cut at the finished surface center.

Standard templates for DSIN Universal Rack Set:



Sample works made by DSIN Universal Rack Set:



杖鑫機械有限公司

DSIN MACHINERY CO., LTD.

<http://www.diywoodtooling.com>

Tel: +886-4-24839458 E-mail: dsin@diywoodtooling.com

